



# Redding Consortium for Educational Equity:

## General Assembly Joint Finance Committee

*Redding Consortium Co-Chairs*

S. Elizabeth “Tizzy” Lockman, Senator for District 3

Matt Denn

February 14, 2024

1

## Redding Consortium Mandate

The Redding Consortium for Educational Equity was created in 2019 to recommend policies and practices to the Governor and Delaware General Assembly that will achieve educational equity and improve educational outcomes for all Pre-K to grade twelve students in the City of Wilmington and northern New Castle County Delaware.



2

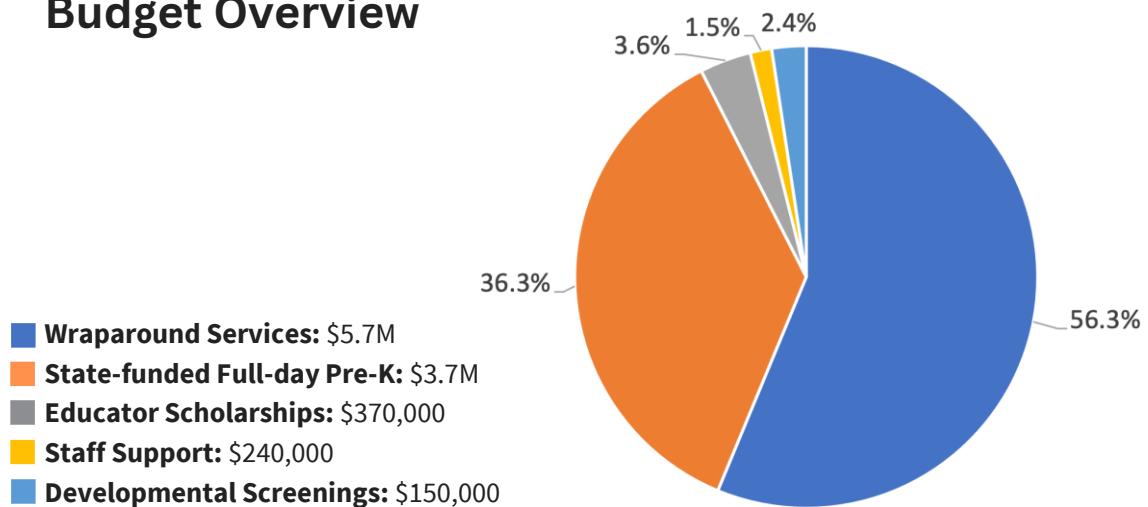
## Budget Request for FY25

The Redding Consortium supports the **Governor's recommended** FY25 budget calling for the continuation of \$10.2M in recurring funds.

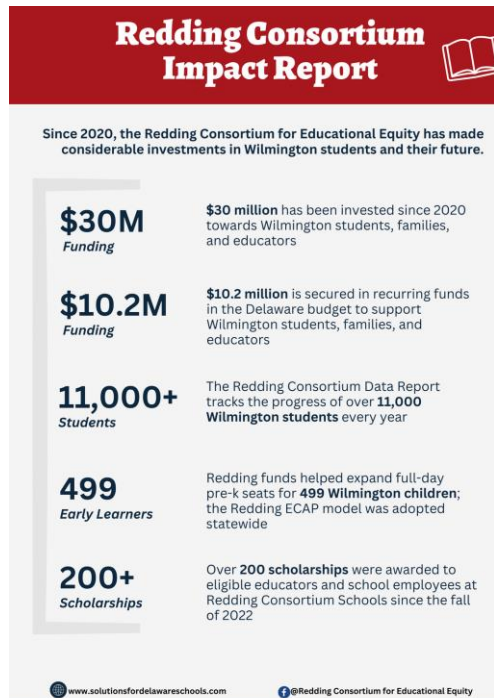


3

## Budget Overview



4



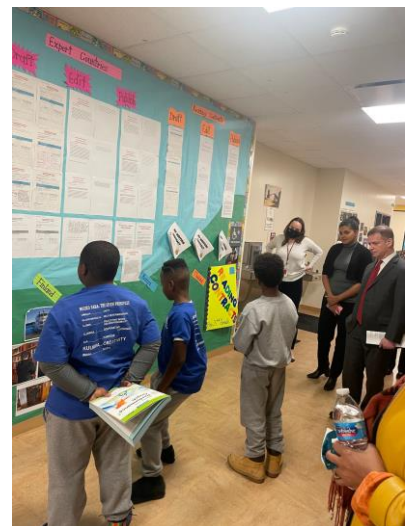
5

## Wraparound Services Programming

**Kuumba Out-of-School Time Before, After, and Summer Programs:** This program is an expansion of Kuumba Academy's out-of-school time programming to meet the needs of its students and families

**Wraparound Bayard:** The Bayard School is partnering with United Way and the Life Health Center to support students in improving outcomes related to academics, behavioral, and socio-emotional health

**EastSide STEM Hub:** The program includes a STEM HUB available to the community after school hours, numerous programs, academic programming after school for students, and a School-Based Health Center



6

## State-Contracted Full-Day Pre-K Program

### Improving early childhood education for children in the City of Wilmington

- **Redding model of full-day Pre-K expanded statewide** through the Early Childhood Assistance Program (ECAP)
- All state ECAP programs are now **offering the same levels of reimbursement and opportunity for full-day services** that started with the Redding-funded programs

7

## Remaining Recommended Operating Funds

- Funding for the [Redding Consortium Schools Scholarship](#)
- **UD & DSU** staff support for the Redding Consortium
- Subsidization of DOE's supervision of **developmental screening** in early childhood facilities



8

## Carryover Funding

- **Education Equity Data Dashboard:** The Redding Consortium, in partnership with the Delaware Department of Education and Data Service Center, will create a publicly accessible racial-equity data dashboard that highlights data about City of Wilmington students and educators through an equity lens
- The **Boost 22-26' Initiative** is a cross-district effort focused on improving graduation rates for high school students in Wilmington through tailored academic support from Redding-funded graduation coaches
- The **Whole School Professional Development** program is a teacher-leader program for educators in schools with large concentrations of students in poverty

9

## Redding Teacher Leadership Initiative

- This is a **whole-school professional development** program based on Redding Consortium work group recommendations
- **Pilot program** launched for the **2023-24 school year**



### THE 12 PARTICIPATING REDDING SCHOOLS:

1. Harlan Elementary
2. The Bancroft School
3. The Bayard School
4. Stubbs Early Education Center
5. Pulaski Early Education Center
6. Joseph E. Johnson, Jr. Elementary School
7. William C. Lewis Dual Language Elementary
8. Shortlidge Academy
9. Warner Elementary School
10. EastSide Charter
11. Kuumba Academy
12. Edison Charter School

10

## Proposed Use of One-time Funding

- Allow for an additional wraparound services grant
- Plan for a potential increase in enrollment in the Redding scholarship program
- Fund Year 3 of the Boost program to support graduation coaches for high school students in Wilmington



11

## Wilmington Learning Collaborative Alignment

- There have been a series of meetings between Redding Consortium and WLC leadership to discuss alignment
- The Redding Consortium and the WLC will coordinate the efficient use of the remaining \$785,000 in one-time professional development funds



12

# REDDING CONSORTIUM & WLC ALIGNMENT

Redding Consortium	Areas of Alignment	Wilmington Learning Collaborative
<b>Purpose:</b> To recommend policies and practices to the Governor and General Assembly that will achieve educational equity and improve educational outcomes for all Pre-K to grade twelve students in the City of Wilmington and Northern New Castle County	<b>Empowering school communities</b>  Improving outcomes for City of Wilmington students  Codelign of expanded learning activities with school communities	<b>Purpose:</b>  To accelerate student outcomes through increased autonomy and decision-making at the school level, supported by school-based collaborative structures
<b>Charges:</b> <ul style="list-style-type: none"><li>• Monitor the educational progress and outcomes of Pre-K -12 students in the City of Wilmington by developing and publishing an annual data report</li><li>• Identify the barriers to educational equity and improved educational outcomes and recommend actions for overcoming these barriers</li></ul>	<b>Evidence-based support services</b>  State-funded programs focused on educational equity and access to high-quality teaching and learning for Pre-K - 12 students  Cohesive governance across school districts  Professional learning investments in teachers and school leader capacity	<b>Charges:</b> <ul style="list-style-type: none"><li>• Completion of a teaching and learning analysis across WLC schools to inform planning and resource allocation</li><li>• Design and launch of Educator Leader Team (ELT) structure and ELT- driven innovation projects</li><li>• Development of Site-Based Community Councils</li><li>• System-wide family advocacy and engagement strategy</li></ul>
<b>Involved school districts:</b> <ul style="list-style-type: none"><li>• Brandywine School District</li><li>• Christina School District</li><li>• Colonial School District</li><li>• New Castle County Vo-Tech School District</li><li>• Red Clay Consolidated School District</li><li>• Charter Schools</li></ul>		<b>Communication and coordination with WLC district partners:</b> <ul style="list-style-type: none"><li>• Brandywine School District</li><li>• Christina School District</li><li>• Red Clay Consolidated School District</li></ul>

*Thank You*

