



1

<b>FY 2027 Bond Bill Request</b>	RDC	\$4,200,000
	Real Estate	\$625,000
	Urban Wildlife Education Center	\$675,000
	Riverfront East Projects	\$3,500,000
	Riverfront West Projects	\$2,500,000
	Frawley Stadium - \$700,000	
	Capital Improvements - \$1,800,000	
<b>Total Request</b>	<b>\$11,500,000</b>	

2

<i>UD Economic Impact Study: 30 Years of Riverfront Development</i>	
<b>Fiscal Expenditures 1996 – 2026</b>	<b>State of Delaware</b> <b>\$631,094,000</b>
	<b>City of Wilmington</b> <b>\$36,893,000</b>

3

<i>UD Economic Impact Study: 30 Years of Riverfront Development</i>	
<b>Revenues Generated 1996 – 2026</b>	<b>State of Delaware</b> <b>\$873,339,000</b>
	<b>City of Wilmington</b> <b>\$231,719,000</b>

4

<i>UD Economic Impact Study: 30 Years of Riverfront Development</i>		
<b>Revenues Generated FY 2026</b>	<b>State of Delaware</b>	<b>\$39,853,398</b>
	<b>City of Wilmington</b>	<b>\$11,877,598</b>

5

<i>UD Economic Impact Study: 30 Years of Riverfront Development</i>			
<b>Economic Impact of Riverfront Employment and Wages 1996 – 2026</b>	<b>Impact</b>	<b>Employment</b>	<b>Labor Income</b>
	<b>1 – Direct Impact</b>	4,997	\$568,798,733
	<b>2 – Indirect Impact</b>	2,164	\$142,822,338
	<b>3 – Induced Impact</b>	2,083	\$138,186,409
	<b>Total Impact</b>	9,245	\$849,807,480

6

# 2025 – 2026 Project Highlights

7

## Chase Center Modernization Project Christina Ballroom Renovation



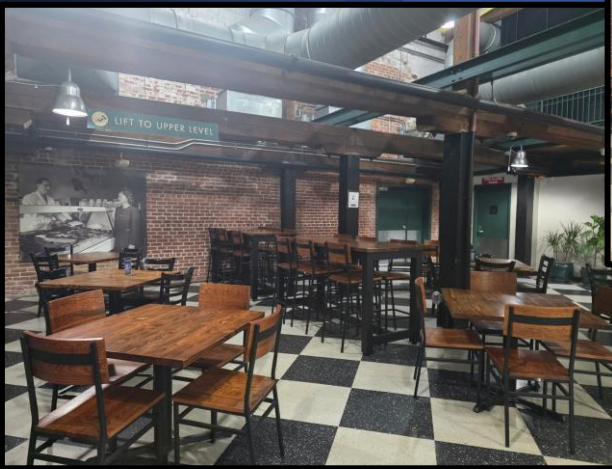
8

## Frawley Stadium Improvements



9

## Riverfront Market Improvements



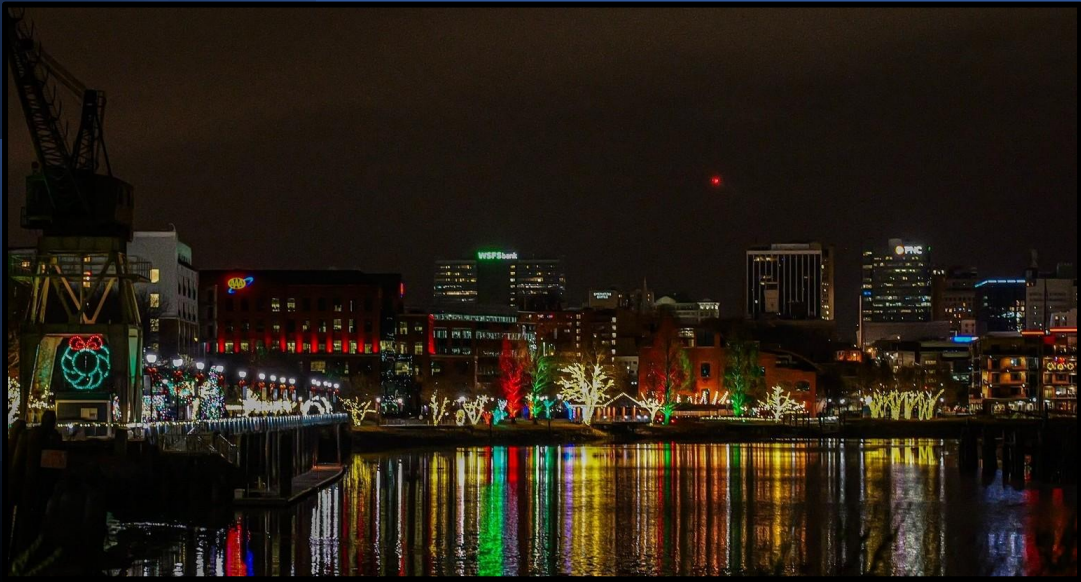
10

## Amtrak Bridge Lighting



11

## Riverwalk Light Display



12

# 2026 - 2027 Projects

13

## Constitution Yards Beer Garden Relocation



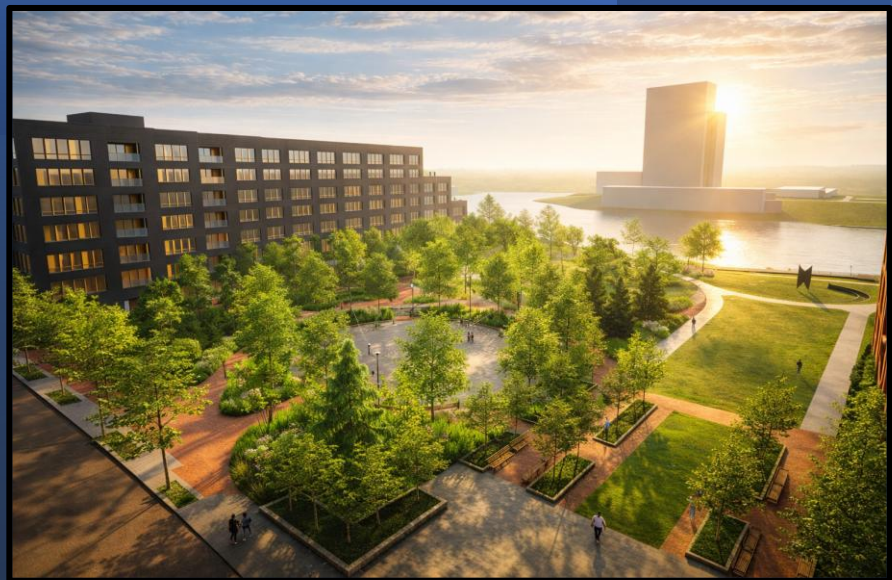
14

# Justison Landing Apartments



15

# Justison Landing Park



16

## The Clubhouse at Penn Cinema



17

## Luxor II



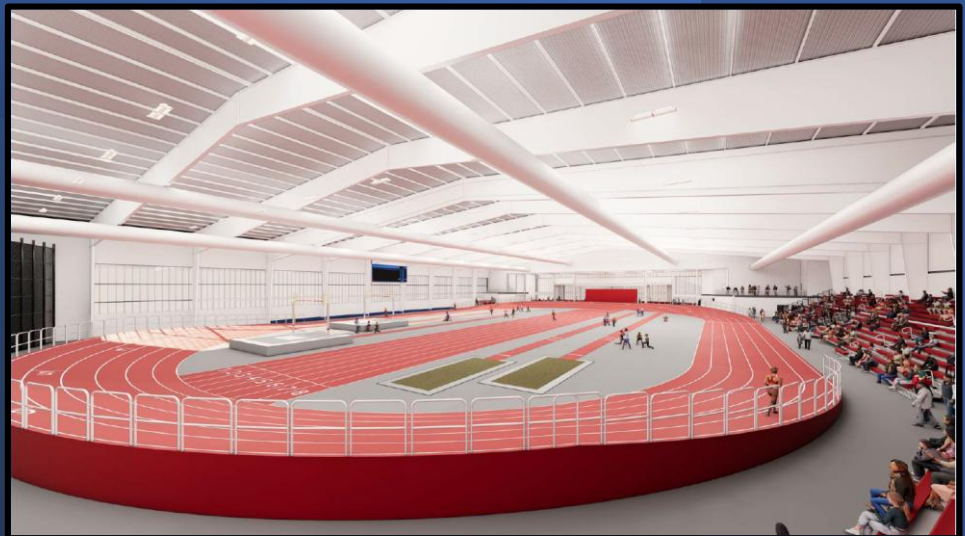
18

# Indoor Track



19

# Indoor Track

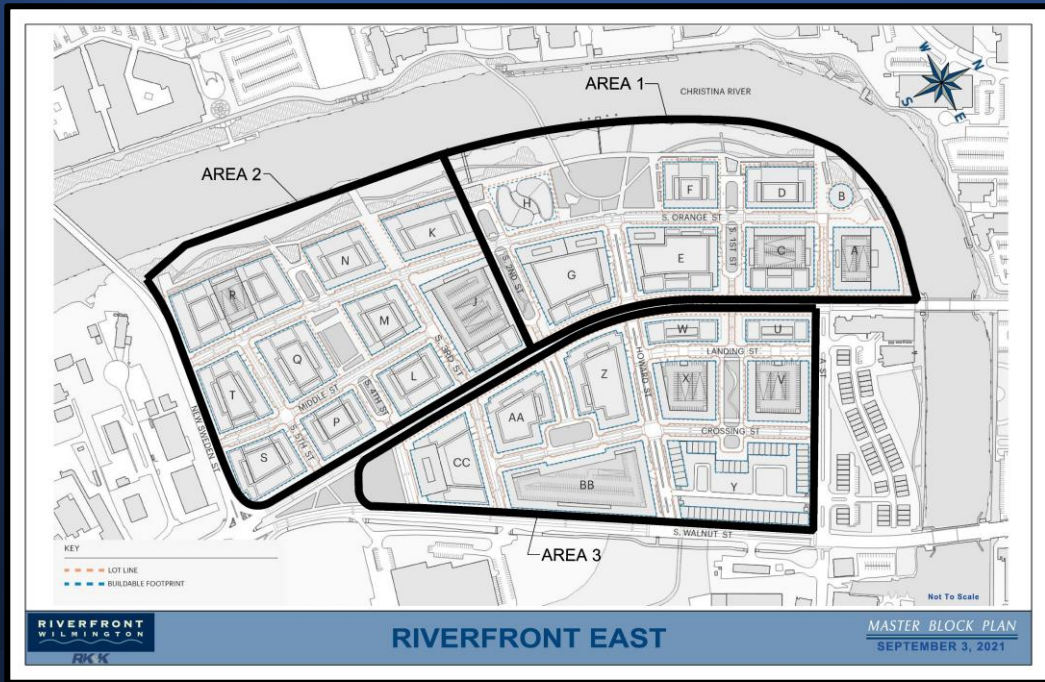


20

# RIVERFRONT

# EAST

21



22

## Area One Infrastructure Project Elements

- Archaeological Resource Investigation – supervised by SHPO – **completed and approved to proceed – April 2026**
- Environmental Investigation and Remediation – supervised by DNREC – **May 2026**
- Bulkhead Construction – **Summer 2026**
- Utility Relocation – **Fall 2026**
- Place Fill to raise elevation of site – **Fall 2026**

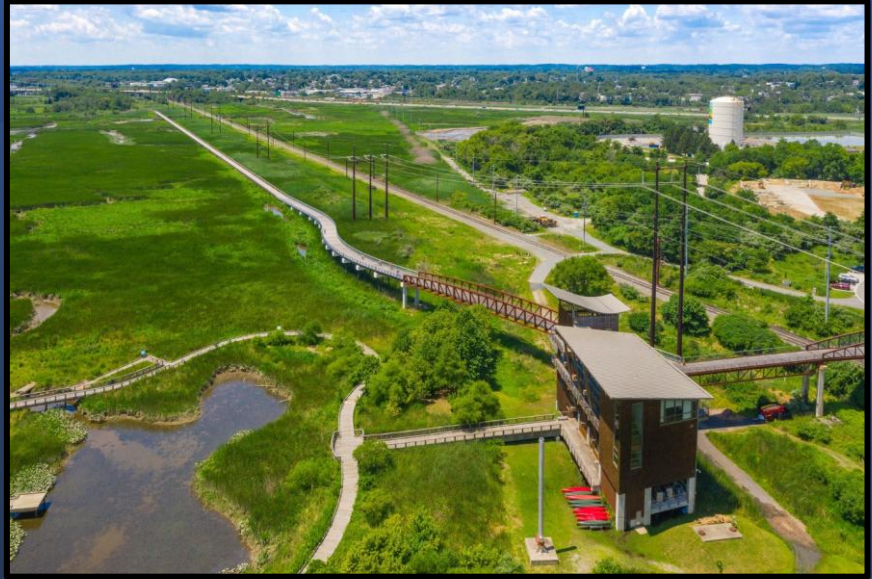
23

## Bulkhead & Riverwalk

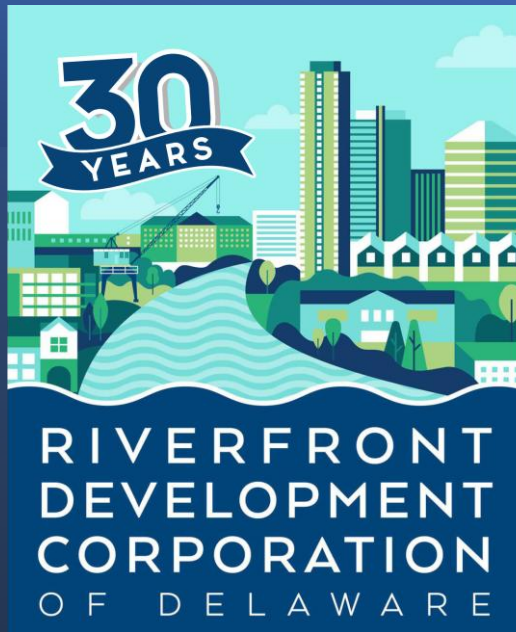


24

**Russell W.  
Peterson  
Urban Wildlife  
Refuge**



25



26