



<p>FY 2025 Bond Bill Request</p>	Operating Funds	\$4,000,000
	Real Estate	\$475,000
	Urban Wildlife Education Center	\$525,000
	Riverfront East Projects	\$2,000,000
	Central Green Design - \$1,200,000	
	Non-Transportation Expenses - \$300,000	
	Real Estate - \$500,000	
	Riverfront West Projects	\$2,500,000
Frawley Stadium - \$500,000		
Capital Improvements - \$2,000,000		
Total Request	\$9,500,000	

Riverfront Development, Operations, Security & Maintenance









Amenities



UD Fiscal Impact Study 2022

State Revenues

\$33 million

City Revenues

\$8.55 million

Wilmington
Riverwalk
named
#10 in
Fodor's Travel
Top 15
Riverwalks
in the US



River House
Apartments



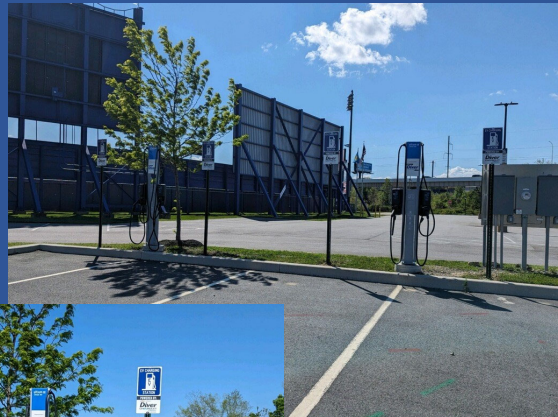
Luxor
Apartments



Riverwalk
Light Display



EV
Chargers



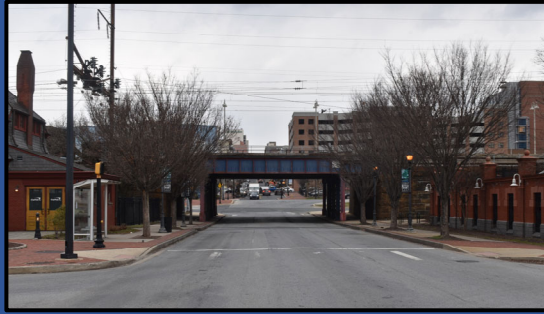
RIVERFRONT

EAST



2024 - 2025 Projects

**Amtrak
Bridge
Project**



 **Christina-Brandywine Rivers
Remediation, Restoration, Resilience
Initiative (CBR4)**



CBR4

Green Infrastructure Network Pilot at Constitution Yards

VOLUNTEERS NEEDED

Date: May 23, 2024
Time: 2-4:30pm
Location: Behind Constitution Yards




Christina-Brandywine River Remediation Restoration Resilience Project

 de.gov/cbr4

A community of partners working together to restore Wilmington's rivers.

We Need Help For:

- Planting Perennial Plugs
- No heavy lifting required
- Wear comfortable clothes
- Garden tools will be provided
- Bring Gloves
- Post Planting Gathering at Constitution Yards







CBR4

Dravo/Christina River Shoreline



CBR4

Peterson Urban Wildlife Refuge Water Trail & Marsh Enhancement



Capital Repairs and Improvements



Frawley Stadium Improvements

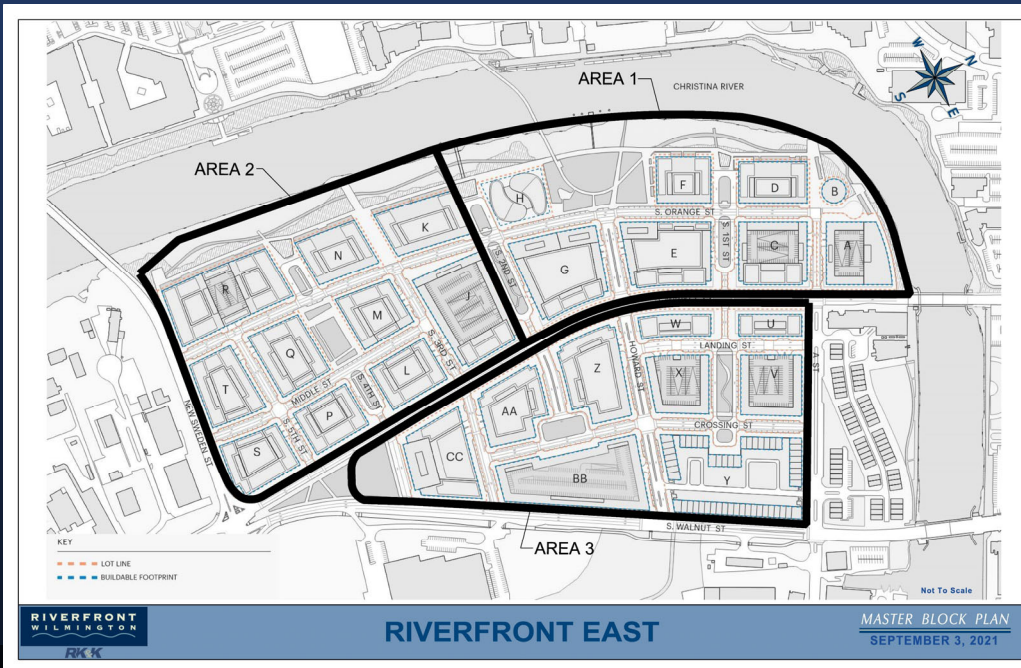


Riverfront Summer Event Series



RIVERFRONT

EAST



Area One Infrastructure Project

- Demolition of Salvation Army & Shellhorn & Hill
- Raise Elevation of Entire Site
- Utility Relocation
- Create a New Road Network
- Dedicated Bike Lane
- Riverwalk
- New Signalized Intersection at A Street

New Street Grid



Riverwalk



Central Green



Riverwalk Light Display



Beech Street Development



Riverwalk Expansion



**RIVERFRONT
DEVELOPMENT
CORPORATION**
OF DELAWARE